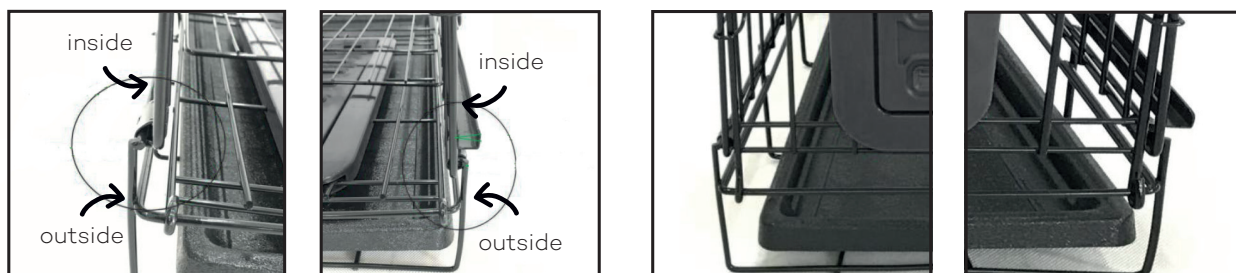
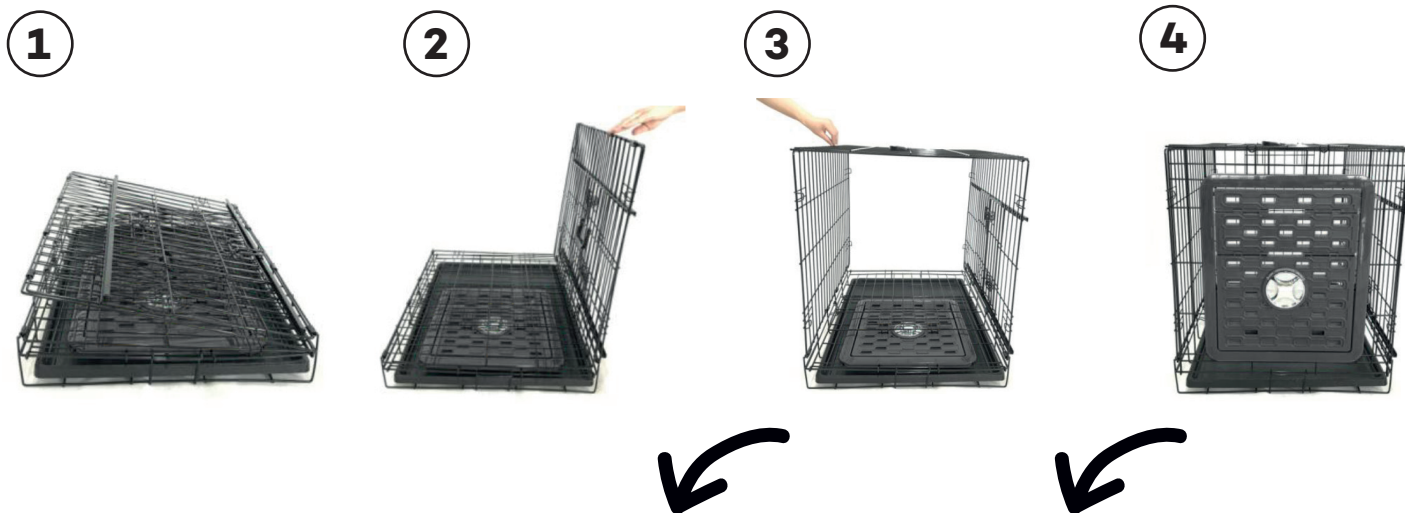


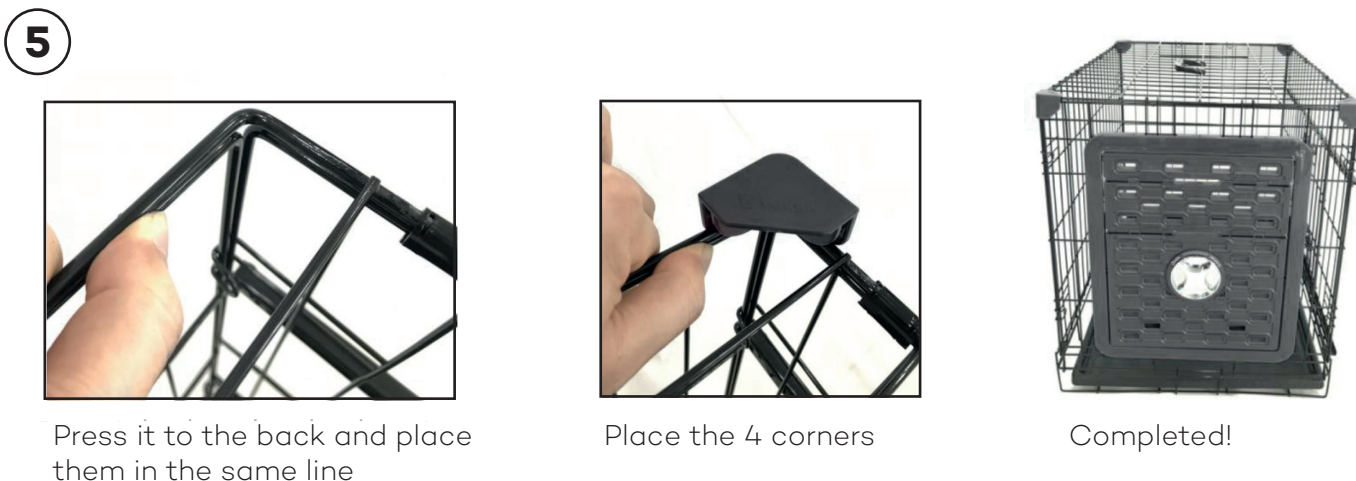
MANUAL

TOPLINE PET KENNEL M

SIZE: **76X53X61CM**



The side panel and side door panel remain inside the base after assembled



Press it to the back and place them in the same line

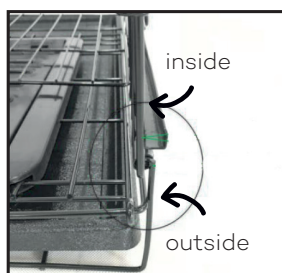
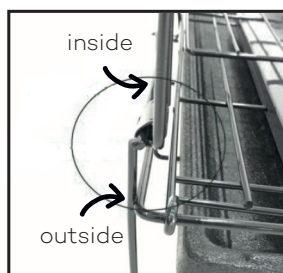
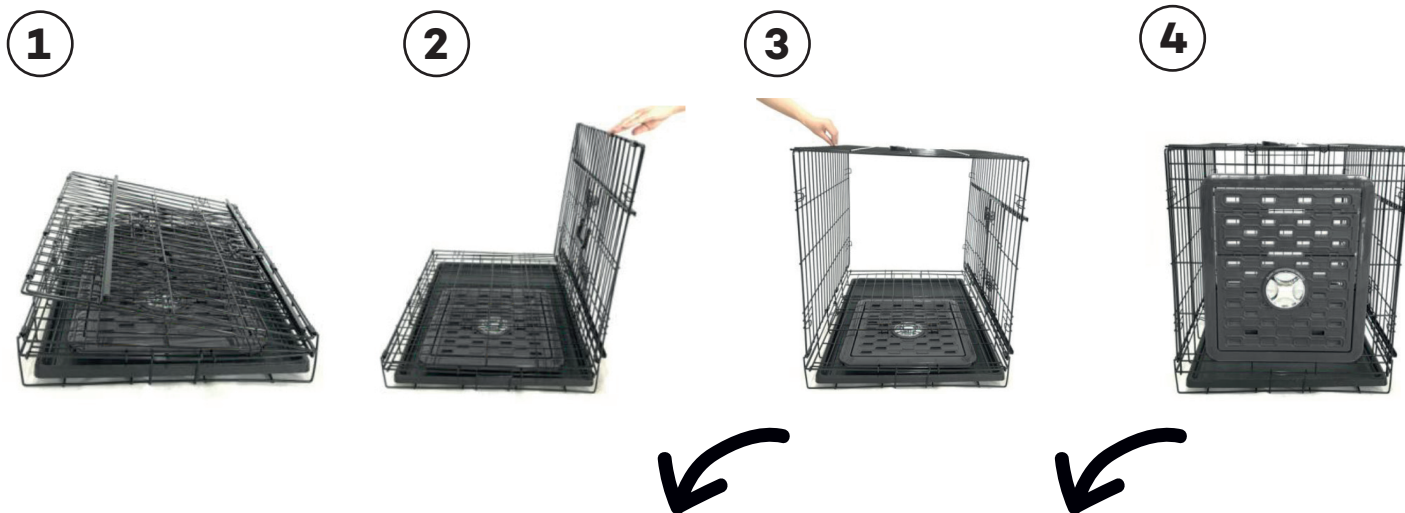
Place the 4 corners

Completed!

MANUAL

TOPLINE PET KENNEL L

SIZE: **91X61X69CM**



The side panel and side door panel remain inside the base after assembled

5



Press it to the back and place them in the same line



Place the 4 corners



Completed!